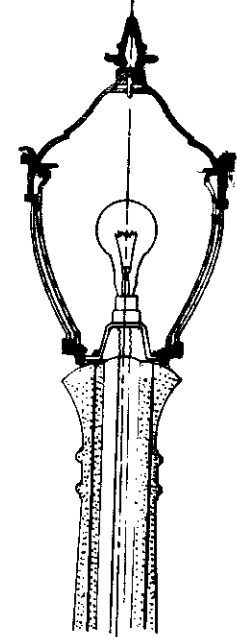


6x6" Hand Hole
Curb Grade

TYPE 100 MARBELITE POST
Scale 1/8"=1'



SECTION THRU CAPITOL
Scale 1/8"=1'

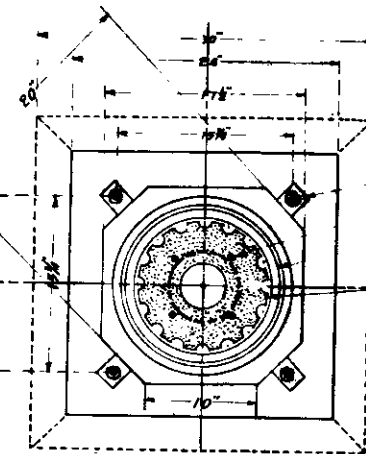
Ends 1 1/2" O.D. & S. Gauge
Varnished Cambric Insul
covered cable 1/4" O.D. & S.
Gauge 1/4" Wall, Varnished
Cambric Covered copper wire
above and of conduit

3 1/2" x 5" Cross Arm
Type P.E. Conduit
with double hole
porcelain cover

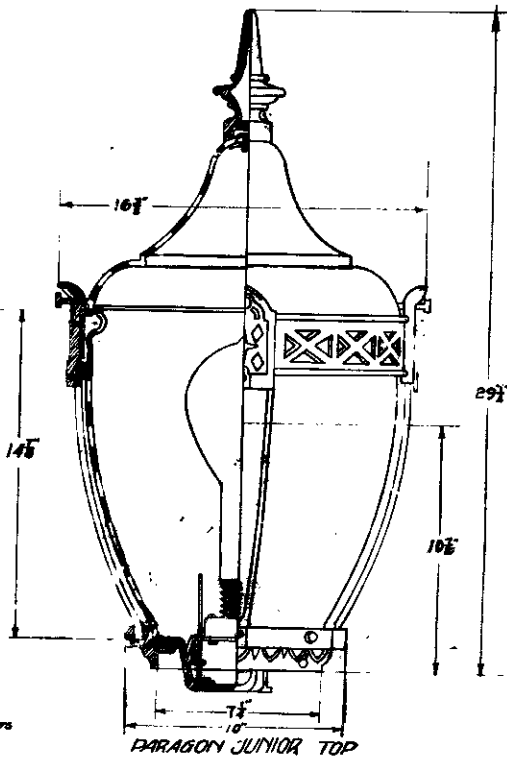
3 Line Cable from high line to
transformer when vault is used.
2 Line cable from transformer
in circuit when transformer
is placed on pole

Anchor Lugs
Arrangement of
Reinforcement
Cross Section of Base
Cross Section of
Shell showing 16 Ribs

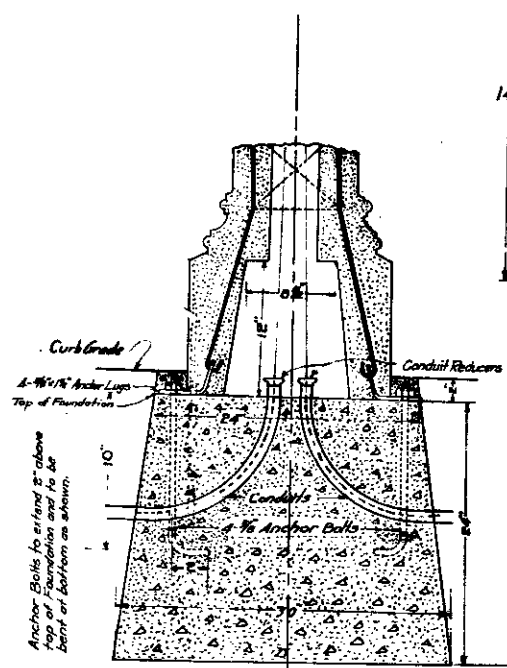
Curb Grade



TOP VIEW OF FOUNDATION AND
SECTION OF BASE OF STANDARD
Scale 1/8"=1'



PARAGON JUNIOR TOP



Anchor Bolts for wires to reduce
friction and prevent rotation, the
bolts are bolted on as shown.

ENLARGED SECTION OF BASE
Scale 1/2"=1'

SHEET NO. [REDACTED]
PLAN NO. [REDACTED]
ORNAMENTAL LIGHT STANDARD TYPE 100
WITH
WESTINGHOUSE PARAGON JUNIOR TOP
AND
TRANSFORMER CONNECTION
CITY OF SAN BERNARDINO CALIFORNIA
DRAWN OCT-1925 C.E. JOHNSON
CITY ENGINEER
Scale as shown.